

PRINT (PLOT)

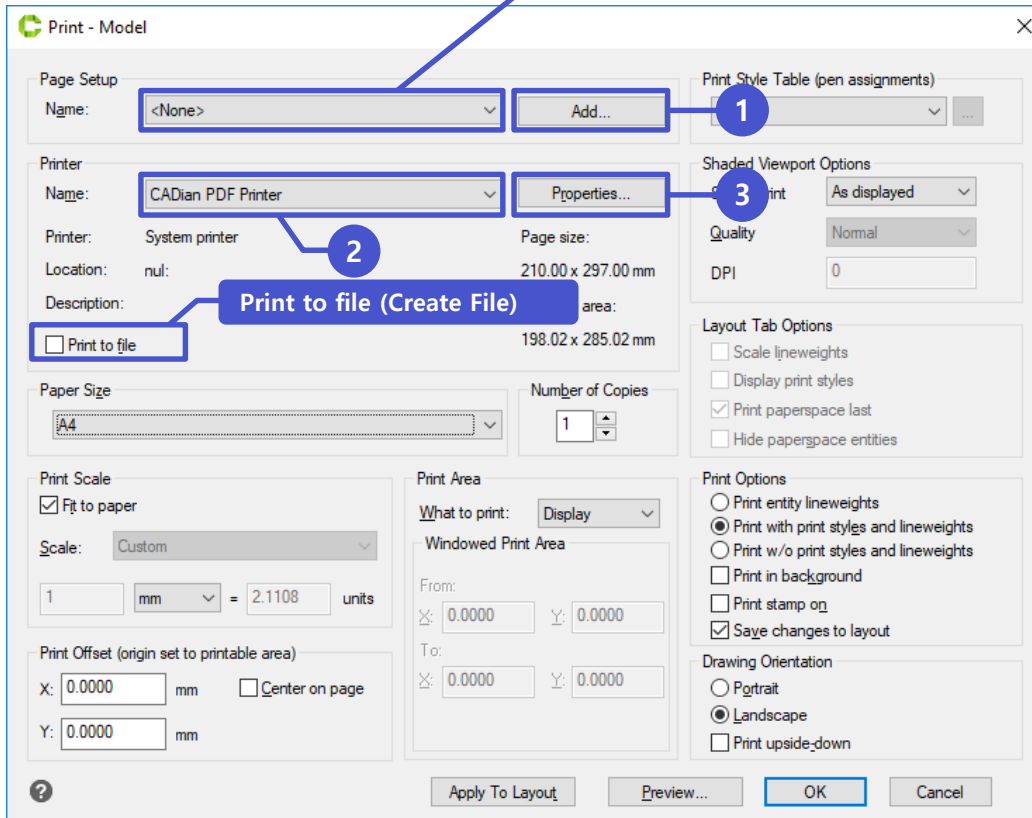
CADian 2020



Plot -1

command : plot (Plot)

Page setup saved list



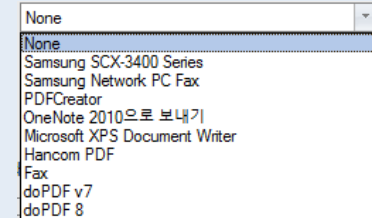
1

Add

-. Save item set in current PLOT dialog

2

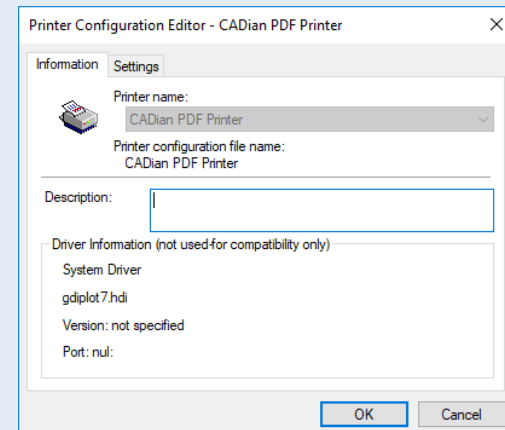
Printer Name



Show currently installed printers

3

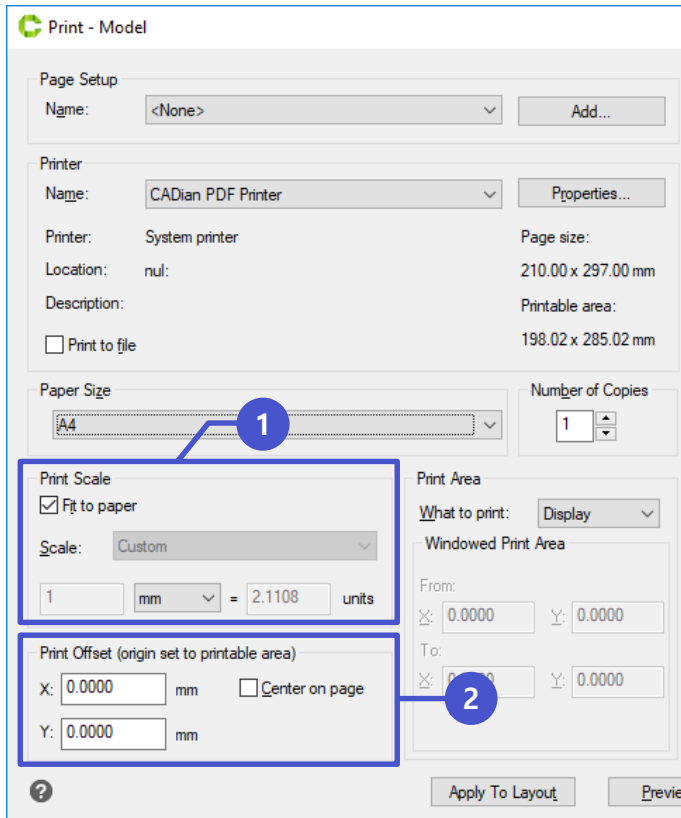
Printer Properties



Printer Settings dialog

Plot -2

command : plot (Plot)



1 Print Scale

Check

Fit to paper

Scale: Custom

1 mm = 56.9575 units

Automatically calculates the scale by referring to the print area

Uncheck

Fit to paper

Scale: Custom

1 mm = 56.9575 units

Enter scale directly

1 Print Scale (Uncheck)

Fit to paper

Scale: Custom

1 mm = 56.9575 units

Units

mm

Custom scale

Custom

1:1

1:2

1:4

1:5

1:8

1:10

1:16

1:20

2 Print Offset

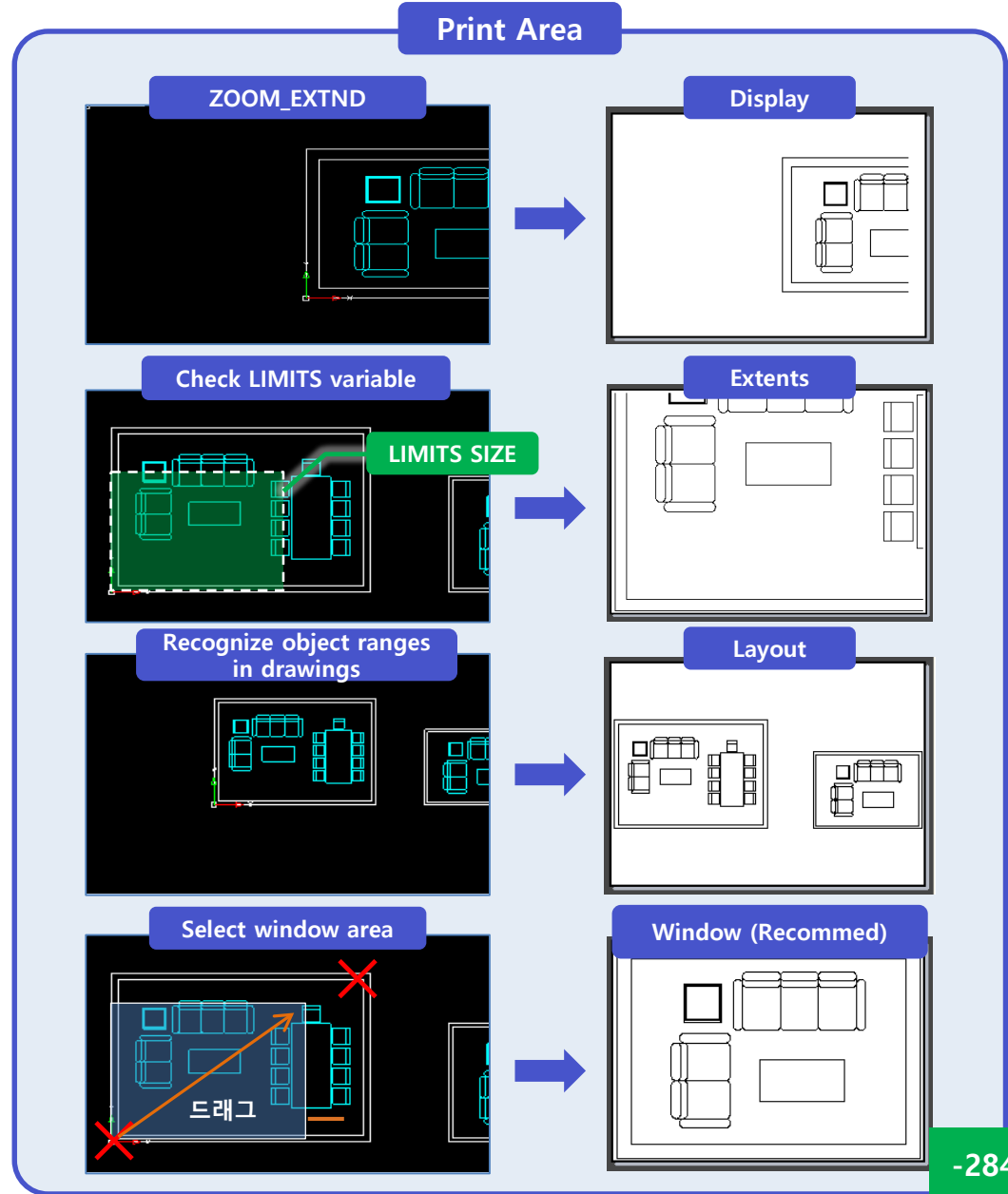
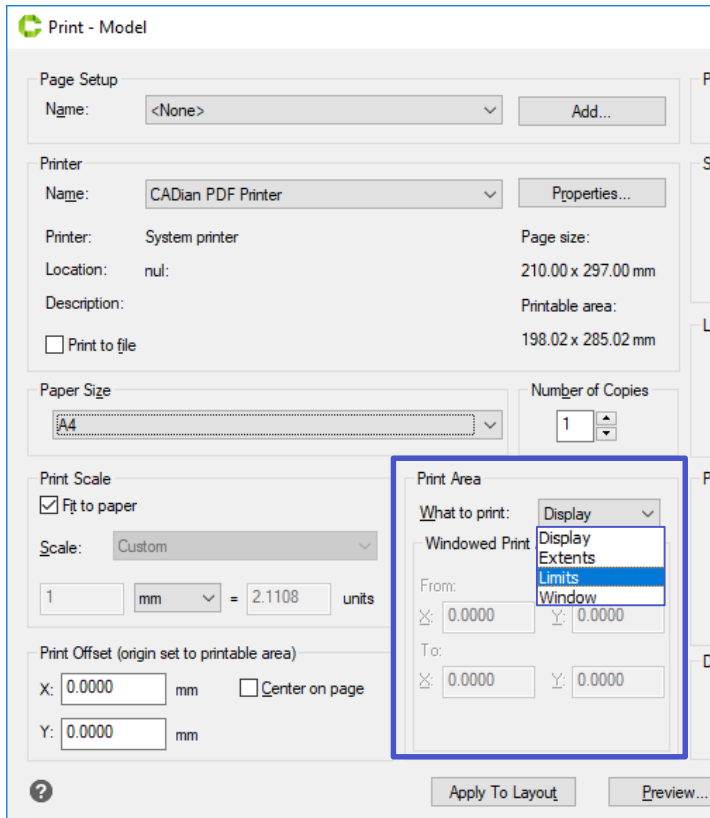
Uncheck "Center on page"

Check "Center on page"

Outline visible and it is invisible because part of it is cut off.

Plot -3

command : plot (Plot)



Plot -4

command : plot (Plot)

Print Style Table (pen assignments)
None

Shaded Viewport Options
Shade print: As displayed
Quality: Normal
DPI: 0

Layout Tab Options
 Scale lineweights
 Display print styles
 Print paperspace last
 Hide paperspace entities

Print Options
 Print entity lineweights
 Print with print styles and lineweights
 Print w/o print styles and lineweights
 Print in background
 Print stamp on
 Save changes to layout

Drawing Orientation
 Portrait
 Landscape
 Print upside-down

Print Style Table Editor

None
None
lcad.ctb
Monochrome.ctb
파란색 보라-하늘.ctb
New...

Print Style Table Editor

Print Style Table Editor - lcad.ctb

General Form View

Print styles:
Color 1
Color 2
Color 3
Color 4
Color 5
Color 6
Color 7
Color 8
Color 9
Color 10
Color 11
Color 12

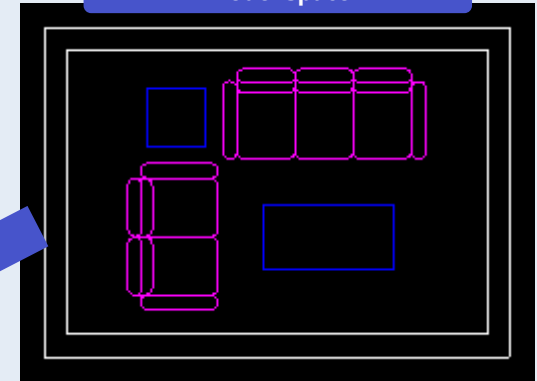
Properties
Color: Use object color
Dither: On
Grayscale: Off
Pen #: Automatic
Virtual pen #: Automatic
Screening: 100
Linetype: Use entity linetype
Adaptive: On
Lineweight: Use object lineweight
Line end style: Use entity end style
Line join style: Use entity join style
Fill style: Use entity fill style

Description:

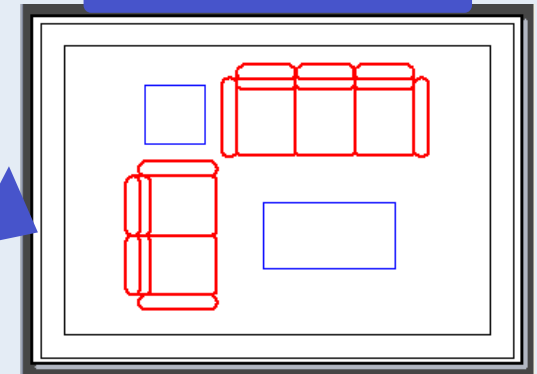
COLOR : Maganta -> Red
LINEWEIGHT : Default -> 2mm

OK Cancel

Model space

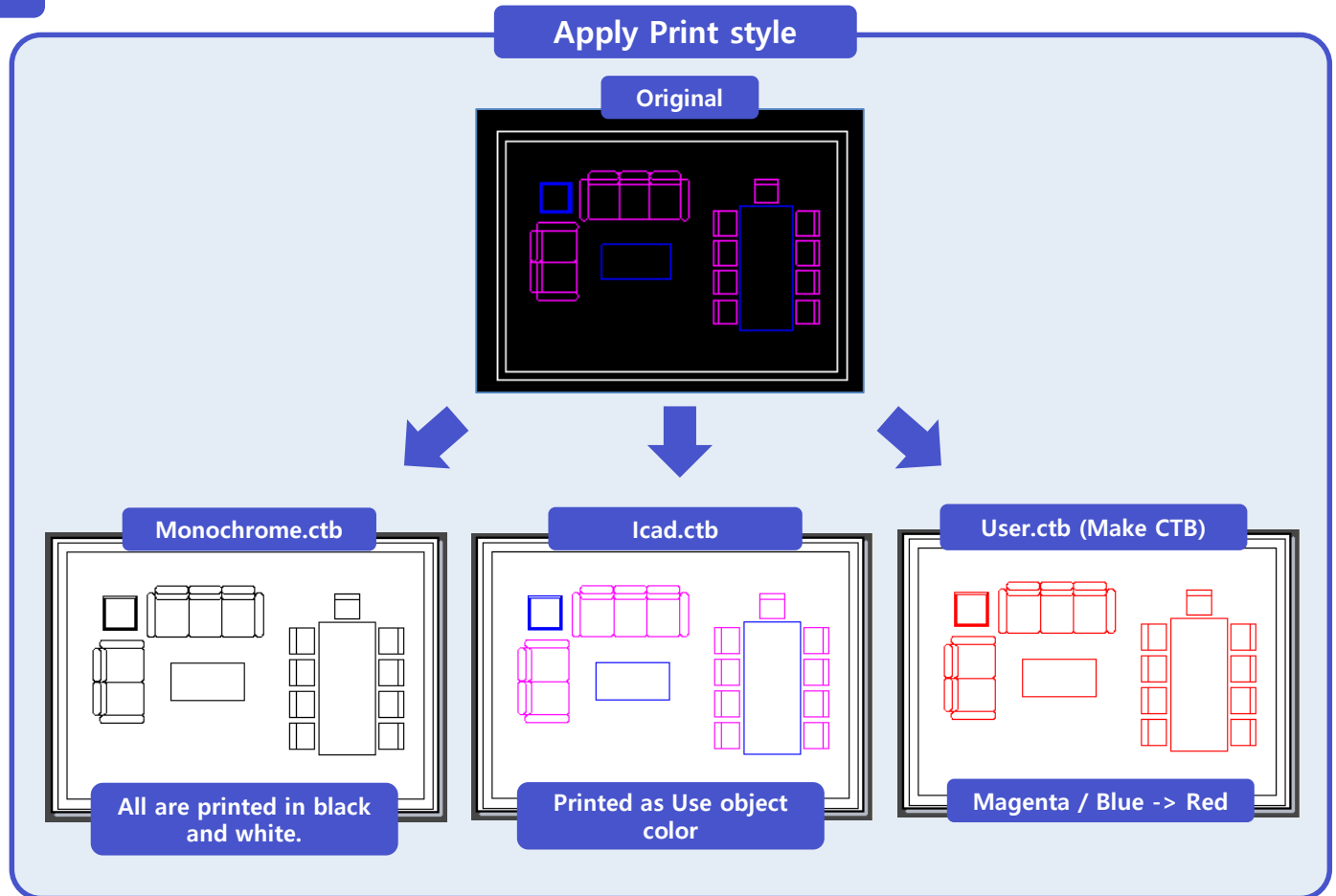
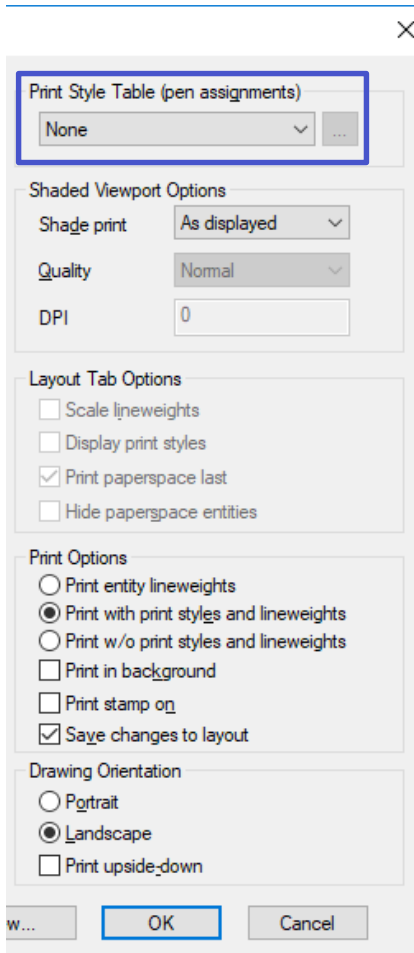


Preview



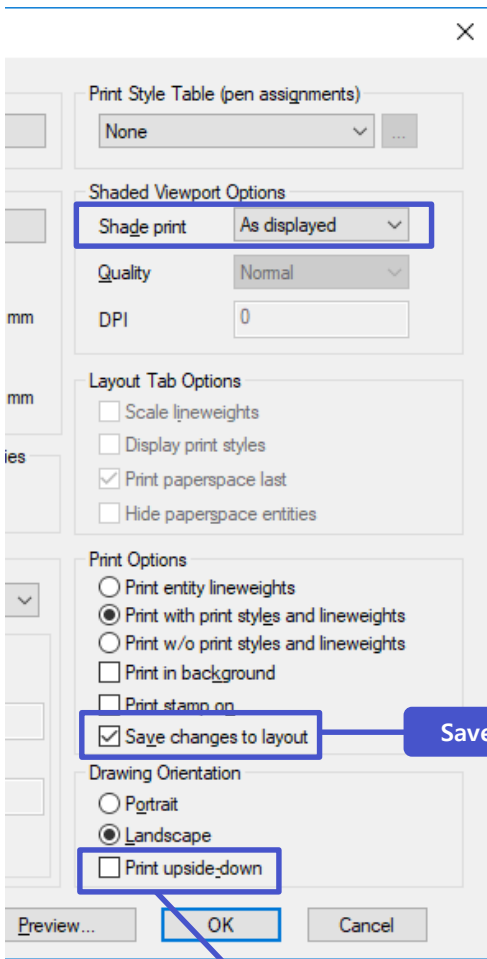
Plot -5

command : plot (Plot)

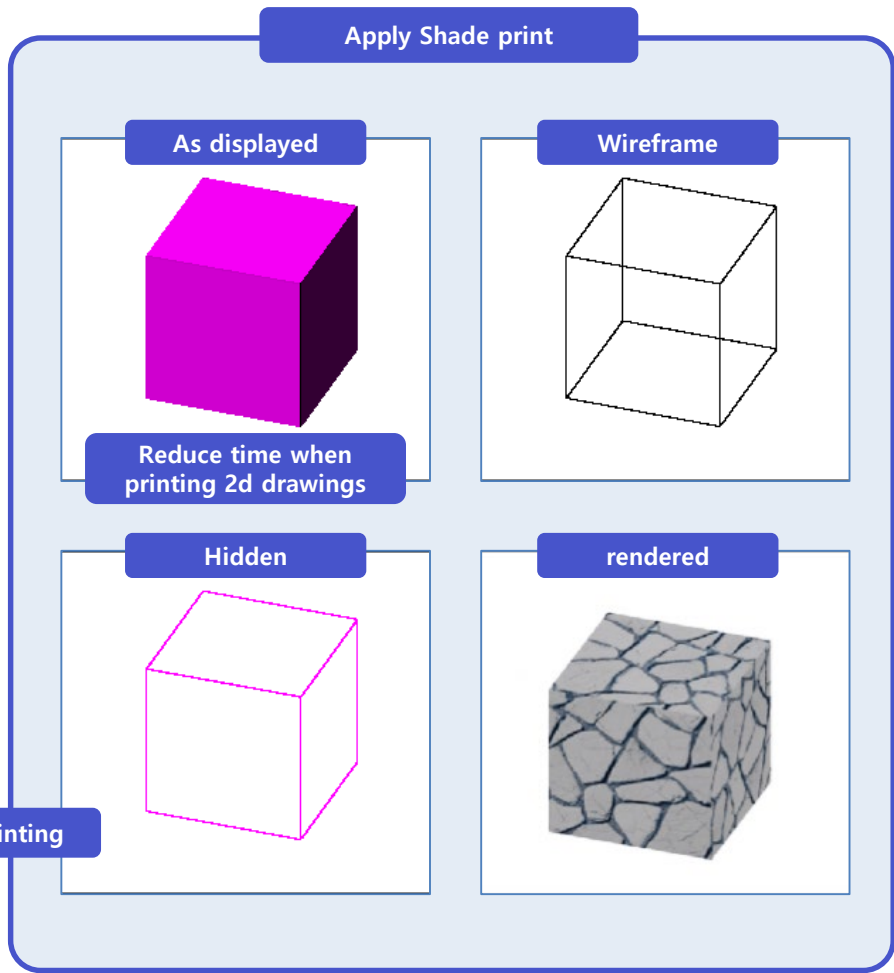


Plot -6

command : plot (Plot)



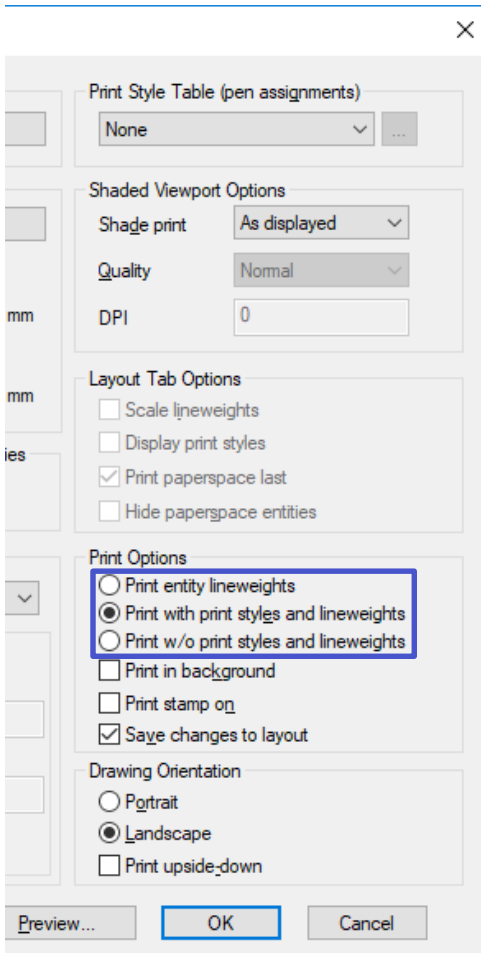
Save settings after printing



Actual printer only (CAD Influence X)

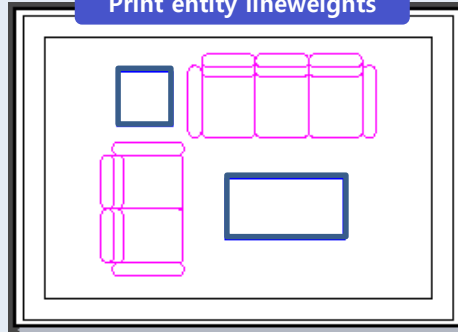
Plot -7

command : plot (Plot)



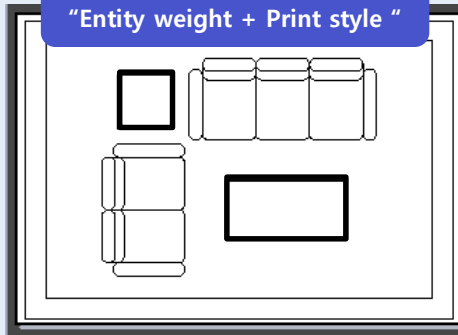
Entity lineweight / Print style

Print entity lineweights



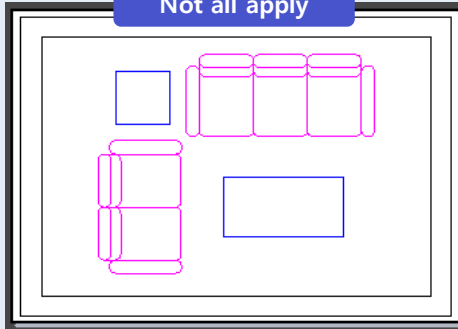
- Apply lineweight of entity and layer
- If checked, print style (ctb) is not applied

Print "Entity weight + Print style"



- Both print style and lineweight of entity and layer are applied (color / linetype etc)
- If checked, it will be applied to printer style (ctb), even if the properties of objects or layers are the default values.

Not all apply



- Prints the entities as it appears on cad screen

Plot -8

command : plot (Plot)

Print Style Table (pen assignments)
None

Shaded Viewport Options
Shade print: As displayed
Quality: Normal
DPI: 0

Layout Tab Options
 Scale lineweights
 Display print styles
 Print paperspace last
 Hide paperspace entities

Print Options
 Print entity lineweights
 Print with print styles and lineweights
 Print w/o print styles and lineweights
 Print in background
 Print stamp on
 Save changes to layout

Drawing Orientation
 Portrait
 Landscape
 Print upside_down

Click "Print stamp on"

Print stamp on

↓

Print stamp on

Check, appear icon

Click icon

Plot Stamp

Plot stamp fields
 Drawing name
 Layout name
 Date and Time
 Login name
 Device name
 Paper size
 Plot scale

Preview
10-10-10

User defined fields
<None> <None>
Add / Edit

Plot stamp parameter file
C:\Users\Wkyh83\AppData\Local\Temp\Roaming\WITC Load Save As

Advanced OK Cancel Help

Checked items are shown in the stamp

Confirm stamp

PRINT

DATE LAYOUT PAPER

2015-07-29 09:23:32 Model doPDF 8 A4

Print stamp option

Advanced Options

Location and offset
Location: Bottom left
Orientation: Vertical
 Stamp upside-down
X offset: 0.1000 Y offset: 0.1000
 Offset relative to printable area
 Offset relative to paper border

Text properties
Font: @Arial Unicode MS
Height: 0.2000
 Single line plot stamp

Plot stamp units
Units: Inches

Log file
 Create a log file plot.log Browse

Edit Location, font etc

OK Cancel Help

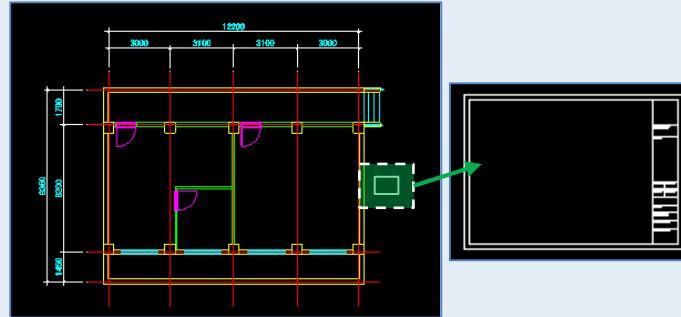
Plot Training -1

command : mvsetup

Training

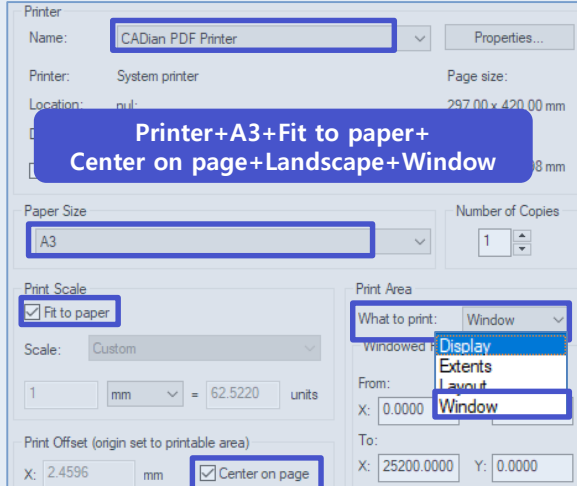
Using mvsetup to scale the paper size

1 plot-1.dwg



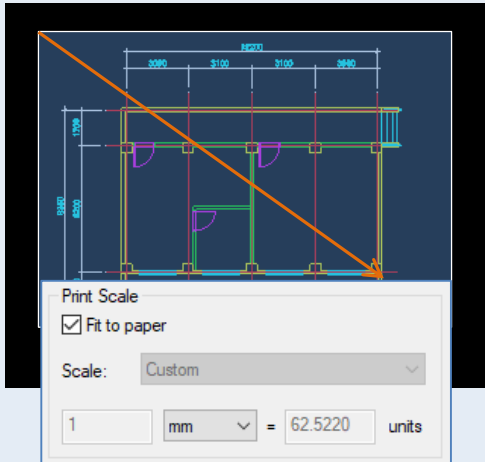
A3 Paper size (420x297)

2 Setting Printer



Printer+A3+Fit to paper+
Center on page+Landscape+Window

3 Windows Select

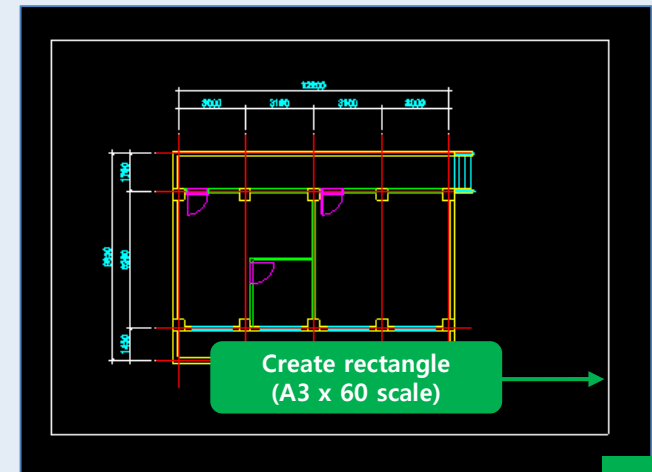


Because it is 62.5220, it scales to 60

4 MVSETUP execute

1. "command : "mvsetup input and SPACE
2. "space? ~<Y>:" n input and SPACE
3. "Enter units ~:" d input and SPACE
4. "~ factor:" 60 input and SPACE
5. "~ width:" 420 input and SPACE
6. "~ height:" 297 input and SPACE

5 Result



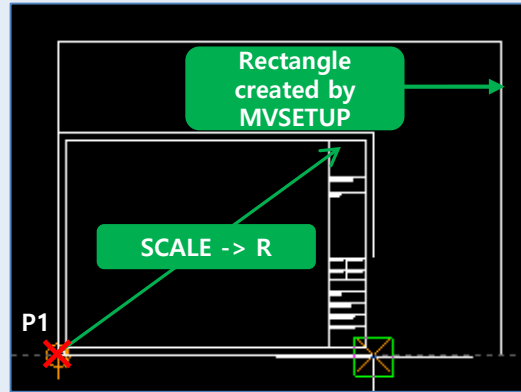
Plot Training -2

command : mvsetup

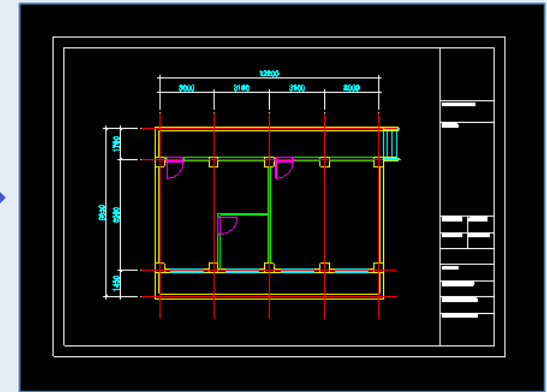
Training

Scale drawing form based on rectangle created by mvsetup (SCALE(R) + PLOT)

1 Continue with "Plot Training -2"

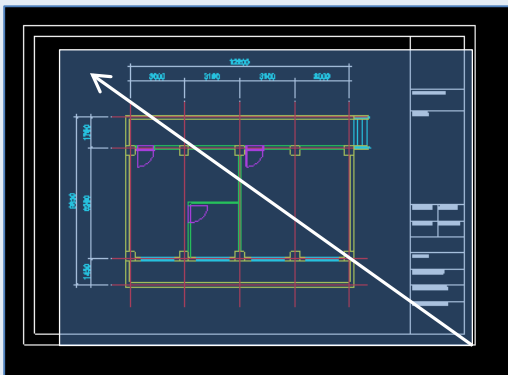


1. Moving the rectangle created by MVSETUP to p1
2. Scale the drawing form entity based on the rectangle (ENTITY EDIT -> SCALE)



Move drawing form

2 Print Setting (Window Area)



Printer :
CADian PDF Printer

Size : A3

Print Scale : 60

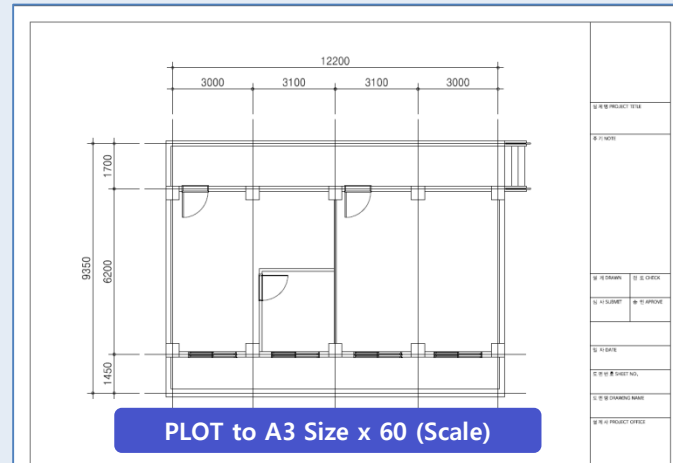
Print Offset :
Center on page

Print Area : Window

Print Style :
Monochrome.ctb

Orientation :
Landscape

3 Result (PLOT)



PLOT to A3 Size x 60 (Scale)

Find a Drawing Scale

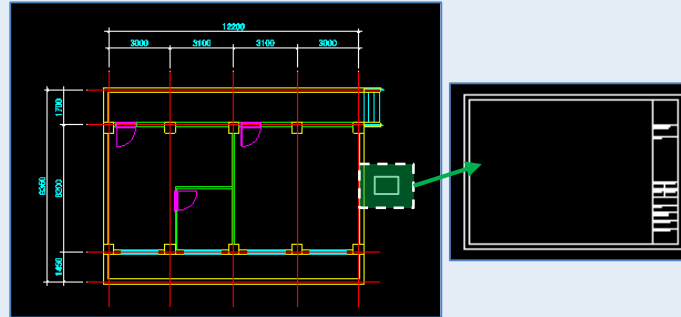
command : plot

command : scale

Training

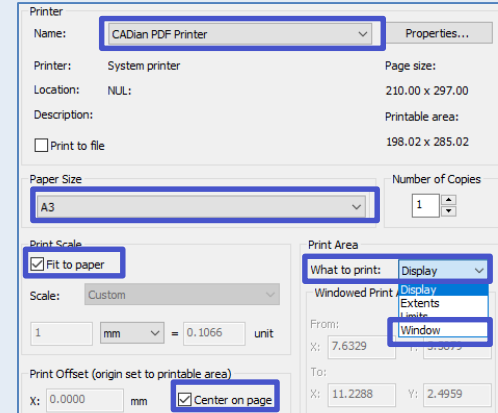
Identify the scale of a drawing and apply a drawing form scale

1 plot-1.dwg



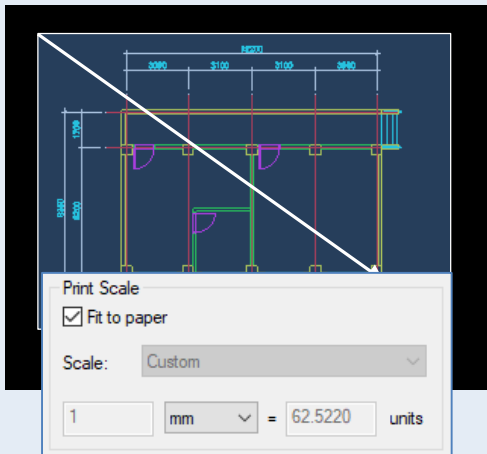
Drawing form of A3 paper (420x297)

2 Printer settings



Printer + A3 + Paper Alignment + Paper Center + Landscape + Window Area

3 Window Area



Since it is 61.3109, the scale should be set to 60.

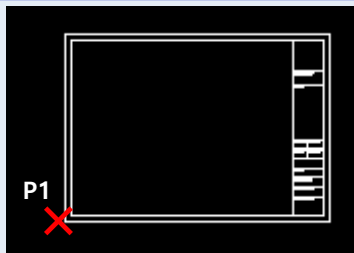
4 Apply scale

1. "command : "sc Input and SPACE

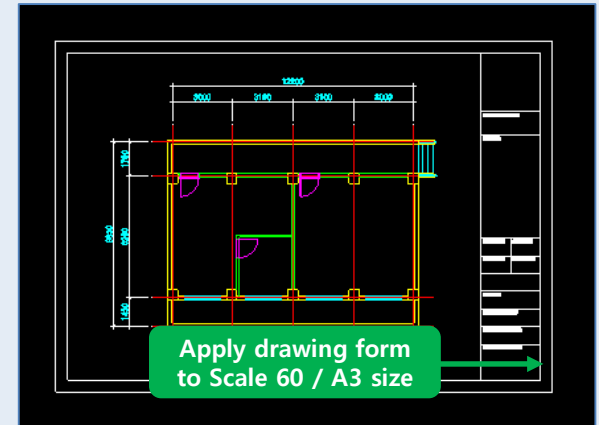
2. "Select entities~ : "
Select drawing form and SPACE

3. "Base Point:" P1 Select and SPACE

4. "~<Scale factor(S):"
60 Input and SPACE



5 Drawing form placement



Apply drawing form to Scale 60 / A3 size

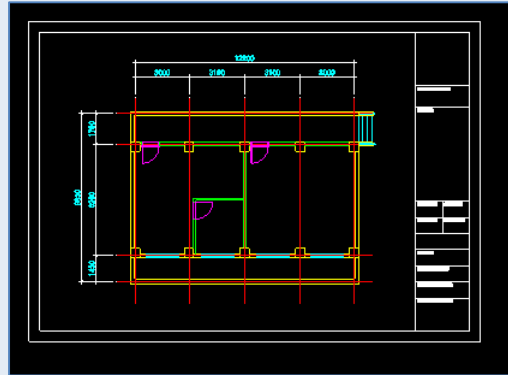
PDF output -1

command : plot

Training

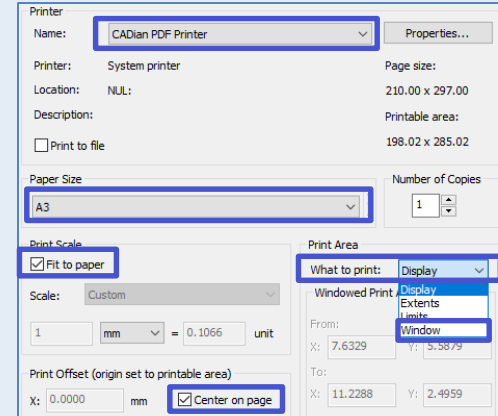
Must be output to the **CADian PDF Printer** provided by CADian.

1 plot-2.dwg



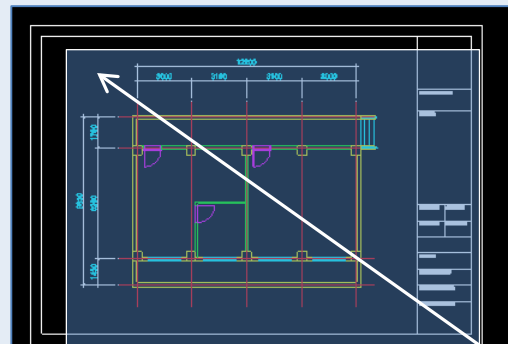
Perform PLOT command

2 Printer settings



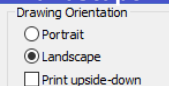
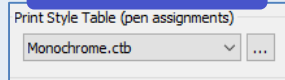
CADian PDF printer.pc3 + A3 + Paper Alignment + Paper Center + Landscape + Window Area

3 Window Area

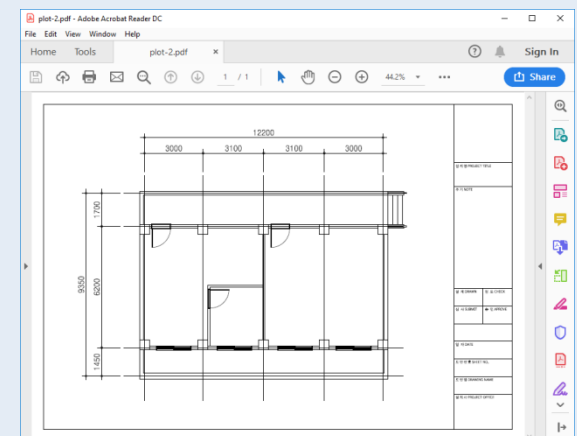


Monochrome.ctb

Drawing Orientation : Landscape



4 PDF output



NOTE

- PDF can be output with CTB applied

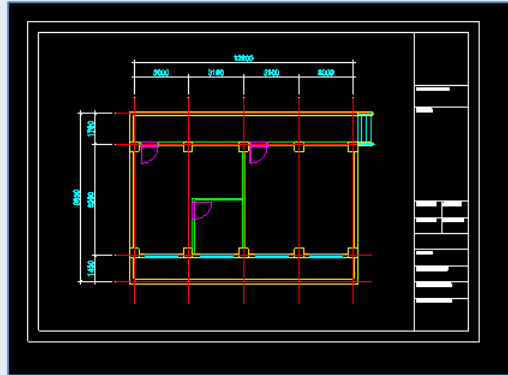
PDF output -2

command : plot

Training

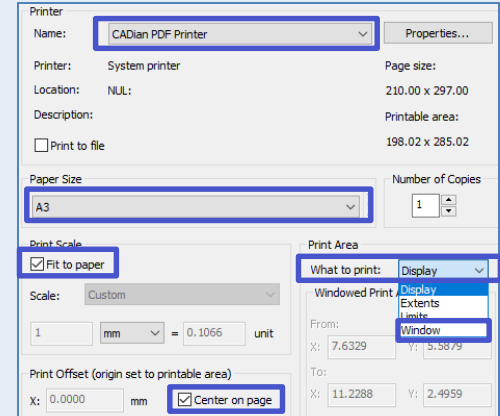
Must be output to DWG to PDF provided by CADian.

1 plot-2.dwg



Perform PLOT command

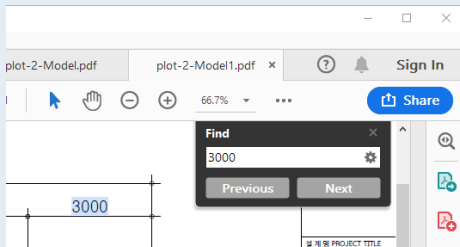
2 Printer settings



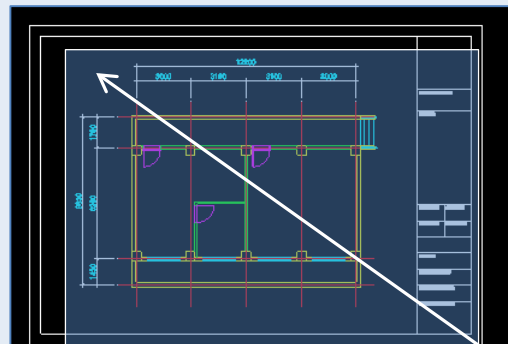
DWG to PDF.pc3 + A3 + Paper Alignment + Paper Center + Landscape + Window Area

NOTE

- PDF can be output with CTB applied
- Available in Adobe Reader (DWG to PDF only)



3 Window Area



Monochrome.ctb

Drawing Orientation : Landscape

Print Style Table (pen assignments)

Monochrome.ctb

Drawing Orientation

- Portrait
- Landscape
- Print upside-down

4 PDF output

